



**MEO Australia Limited**

ABN 43 066 447 952

Level 17  
500 Collins Street  
Melbourne Victoria 3000 Australia

Tel: (+61 3) 9614 0430  
Fax: (+61 3) 9614 0660  
Email: admin@meoaustralia.com.au  
Website: www.meoaustralia.com.au

**ASX AND MEDIA RELEASE**

**BLACKWOOD-1 WELL WEEKLY DRILLING REPORT – No 2**

**Key Points:**

- **Drilled 26 inch hole to 460m**
- **20 inch casing landed and cemented**
- **BOP fitted and tested**
- **Drilling 17½ inch hole to 1265m**

MELBOURNE, AUSTRALIA (February 7, 2008) -- MEO Australia Limited (ASX: MEO) submits this drilling report for the period ending 1000 hours, February 7, 2008. Blackwood-1 was spudded at 1830 hours (ACST) on February 1, 2008 in Exploration Permit NT/P68.

The rig completed the cementing of the 20 inch casing to 455m and has installed and tested the Blow-out Preventer stack (BOP). The rig is currently drilling the 17½ inch hole to a section target depth of 1265m, where the 13¾ inch casing string will be landed.

The estimated depth of the Blackwood structure Top Plover Formation target reservoir is 3351m.

Blackwood-1 is being drilled by Seadrill's West Atlas jack-up rig contracted to MEO for two firm wells. The Blackwood-1 wildcat well is being 100% funded as a sole risk operation by MEO. The well is designed as a vertical well to penetrate, log and recover gas samples in the Plover Formation of the Blackwood structure.

The participants in the Blackwood-1 well are:

TSP Arafura Petroleum Pty Ltd (MEO subsidiary)	50%
Oz-Exoil Pty Ltd (MEO subsidiary)	50%

**C.R. Hart**, Managing Director  
MEO Australia Limited  
NT/P68 Operator

## BLACKWOOD-1 WELL

**DETAILS**

<b>Licence:</b>	<b>NT/P68</b>
<b>Operator:</b>	<b>MEO Australia Limited</b>
<b>Rig:</b>	<b>Seadrill West Atlas jack-up</b>
<b>Surface location:</b>	<b>Latitude: 10 deg 12 min 37.753 sec</b> <b>Longitude: 128 deg 46 min 48.539 sec</b> <b>Datum: GDA94</b>
<b>Seawater Depth:</b>	<b>60 m LAT</b>
<b>Spud Date:</b>	<b>February 1, 2008</b>
<b>Target Strata:</b>	<b>Plover Formation</b>
<b>Total Depth:</b>	<b>3454 metres (MDRT).</b> (MD - measured depth below the rig's rotary table - RT)
<b>Primary Target Depth:</b>	<b>Top Plover Fm 3351 metres (MDRT)</b>
<b>Designated Authority:</b>	<b>Northern Territory Department of Primary Industry, Fisheries and Mines (DPIFM)</b>
<b>Reservoir Objectives:</b>	<b>Plover Formation: Determine the presence or otherwise of hydrocarbons (gas/condensate); reservoir properties including intergranular porosity and permeability; the presence of any fracture system to contribute to productivity and the level of CO<sub>2</sub> and H<sub>2</sub>S in the gas.</b>
<b>Production Objectives:</b>	<b>In a success case, the full Plover Formation will be drilled to the interpreted structural spill point to confirm a gas-water-contact. While no production tests are planned for the Plover Formation, a full log suite will be acquired including image logs, rotary side-wall core samples obtained, and hydrocarbon samples and pore pressure data will be recovered by Modular Dynamics Testing (MDT) testing.</b>
<b>Well Design:</b>	<b>Blackwood-1 is a vertical well. The well design is to drill a 26" hole to 465m and set a 20" conductor. A 13<sup>3</sup>/<sub>8</sub>" intermediate casing will be set in a 17<sup>1</sup>/<sub>2</sub>" hole drilled to 1265m. Drill a 12<sup>1</sup>/<sub>4</sub>" vertical hole to planned TD of 3454m, log and MDT test. 9<sup>5</sup>/<sub>8</sub>" backup casing string is available to drill 8<sup>1</sup>/<sub>2</sub>" hole to TD in the Plover Formation if the pore pressures are lower than anticipated requiring a reduction in mud weights while drilling the Plover Formation.</b>

Blackwood-1 is being planned as a high temperature (HT) well, based on the conditions encountered at the nearby offset wells, Heron-1 & Heron-2. The HT criteria being:

- Maximum anticipated bottom-hole temperatures exceeds 150°C

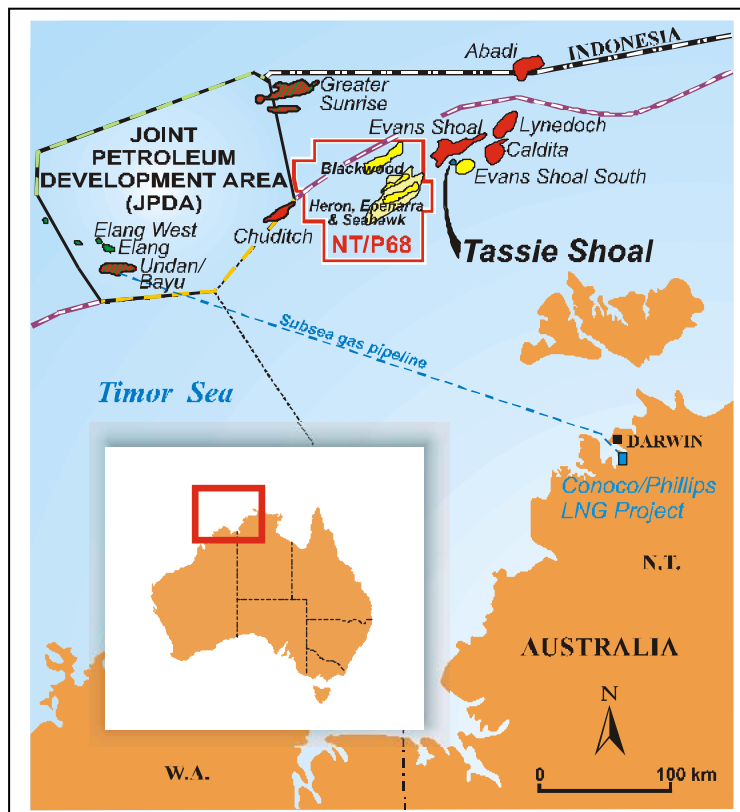
## MEO Pre-Drill Estimates

Target Reservoir	Undiscovered Gas-in-Place	Prospective Recoverable Resource
Blackwood: <u>mid case</u> Plover Formation	<b>1461 Bcf</b>	<b>1031 Bcf</b>
Blackwood: <u>high case</u> Plover Formation	<b>2572 Bcf</b>	<b>1816 Bcf</b>

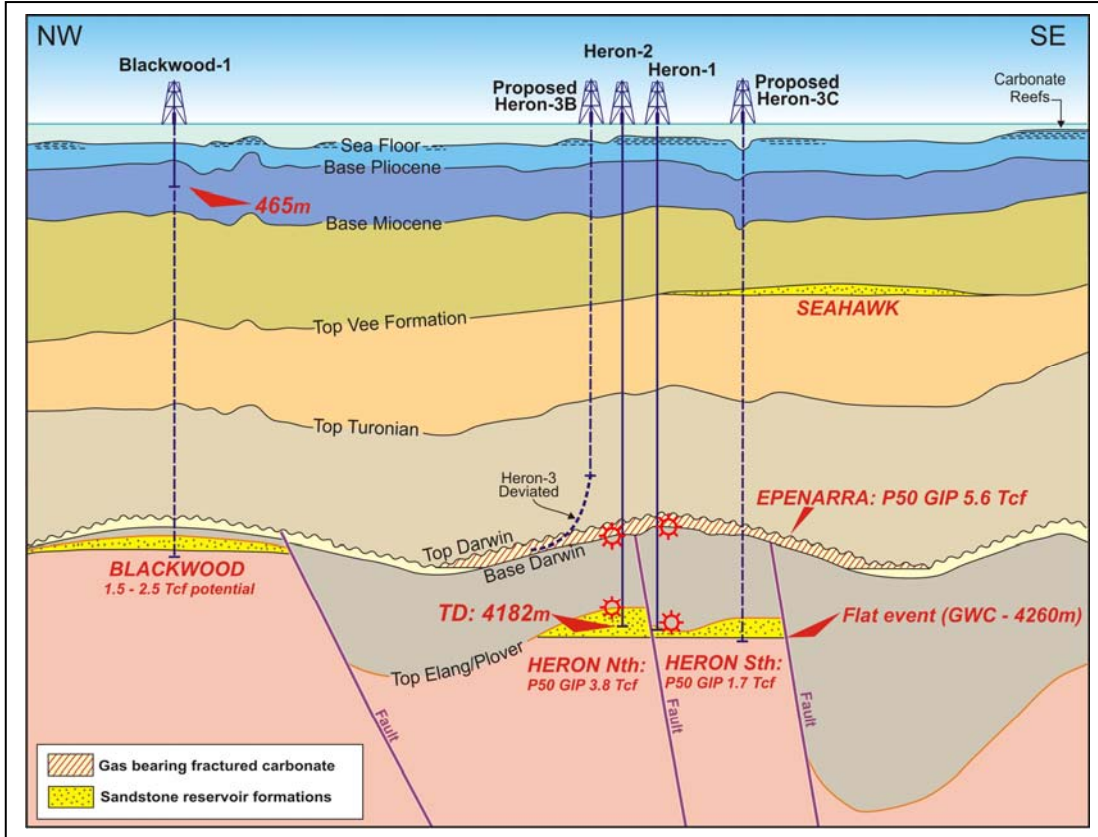
## Summary of potential

Blackwood-1 well is being drilled to test the Blackwood Prospect targeting Middle Plover sandstone reservoirs on a northeast – southwest trending tilted fault block at the hingeline between the Sahul Platform and the Malita Graben. The Blackwood Prospect at Top Plover Formation appears to be a tilted fault block closure located immediately northwest of the Wonarah-1 well (Shell -1997). The areal relief on the closure is approximately 115sq km and a vertical relief of 145m. MEO has interpreted the available 2D seismic data over the Blackwood Prospect incorporating existing 2D data acquired by Shell in 1996 and the new Blackwood 2D seismic data acquired in 2006 with improved the depth conversion by using the seismic PSDM velocities from tomographic inversion of seismic data. An independent assessment of risk indicates the probability of geological success at 32%.

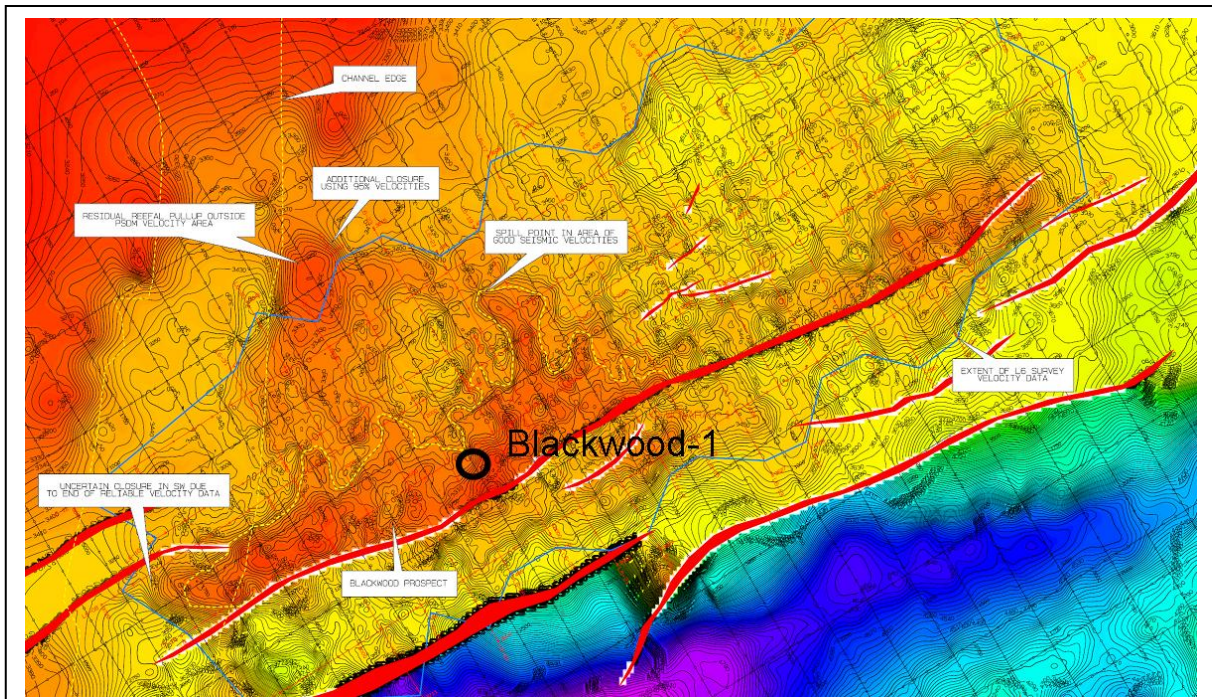
### NT/P68 Permit Location showing proximity to Tassie Shoal (site of environmentally approved LNG and methanol production projects)



Schematic showing target horizons and Heron-2 and Blackwood-1 well locations



Plover Formation depth map over Blackwood and well location



**WELL NAME: Blackwood-1**  
 WELL TYPE: Exploration  
 WELL AREA: NT/P68, Bonaparte Basin  
 RIG: Seadrill, West Atlas

MD (RT) m	STRATIGRAPHY TOPS MDRT	
250	96m	Puffin Fm
500	514m	
750		Vee Fm
1000	994m	
1250	1100m	
1500	1208m	
	1238m	
	1384m	Wangarlu Fm
1750	1497m	
2000	2083m	
2250		Darwin, E. Shoals/ Plover Fm
2500		
2750		
3000		
3250		
3500	3301m	
	3321m	
	3331m	
	3351m	
	TD 3454m	

### Blackwood-1 Time - Depth Curve

Updated to 09:00hrs 07/02/2008

Commence Operation: 22:00hrs 29th Jan 2008  
 Spud Blackwood-1: 18:30hrs 1st Feb 2008

